



GAT MONTHLY MEMBERSHIP PROGRESS REPORT

Results as of: 5/31/2023

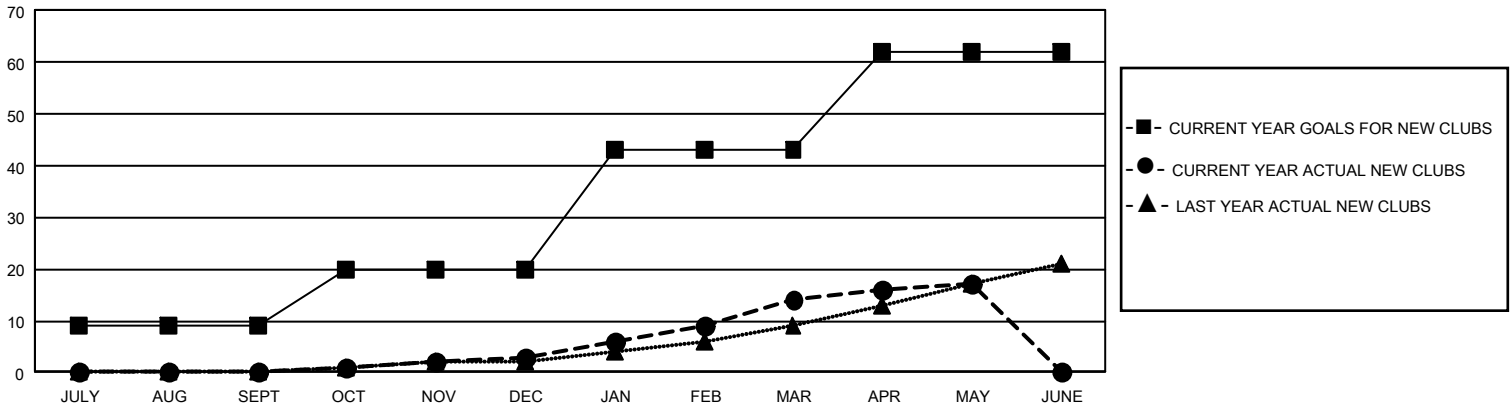
GAT Constitutional Area 5 - Japan

REPORT DOES NOT INCLUDE CLUBS IN UNDISTRICTED AREAS.

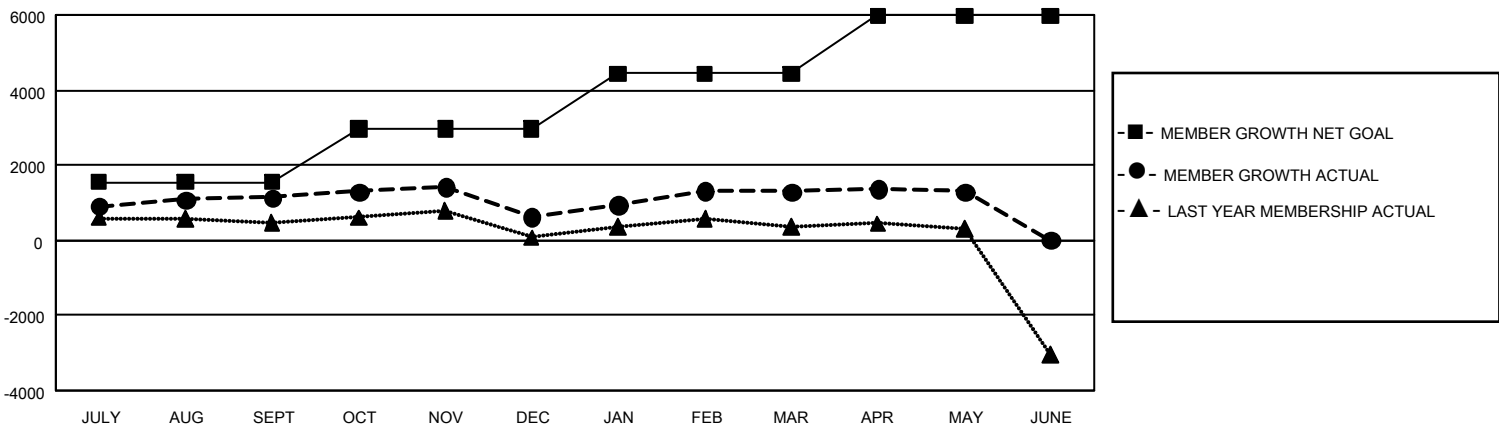
Clubs			
RESULTS FOR 2022-2023			
QUARTER	NEW CLUB GOAL	NEW CLUBS	DROPPED CLUBS
JULY/AUG/SEPT	27	0	5
OCT/NOV/DEC	33	3	5
JAN/FEB/MAR	69	11	3
APR/MAY/JUNE	57	3	1

Members			
RESULTS FOR 2022-2023			
QUARTER	MEMBER GROWTH NET GOAL	MEMBER GROWTH ACTUAL	DROPPED MEMBERS ACTUAL (including transfers)
JULY/AUG/SEPT	1540	2,714	1,429
OCT/NOV/DEC	1435	1,318	1,776
JAN/FEB/MAR	1461	2,078	1,313
APR/MAY/JUNE	1540	1,132	1,090

GOALS AND ACTUAL NEW CLUBS CUMULATIVE



GOALS AND ACTUAL MEMBERS CUMULATIVE



DROPPED CLUBS: 14	
DROPPED MEMBERS	
DECEASED	802
CLUB CANCELLED	18
OTHER	4,787
TOTAL	5,607

1,989 CLUBS OF 2,822 ADDED 1 OR MORE NEW MEMBERS

[CLICK HERE FOR CUMULATIVE MEMBERSHIP DATA](#)

GENDER DISTRIBUTION	
MALE	76,546 (76.39%)
FEMALE	23,649 (23.60%)
NON BINARY	0 (0.00%)
PREFER NOT TO ANSWER	8 (0.01%)
TOTAL FAMILY UNIT MEMBERS	33,462
FAMILY MEMBERS PAYING HALF DUES	18,512